



WINESTIMATOR®

THE LEADING PROVIDER OF COST ESTIMATING SOLUTIONS

WinEst Scheduling Integrator™

Primavera Project Planner® (P3®)

WinEst estimating software is an industry leading tool that enables architects, engineering, construction professionals to quickly and easily create accurate and detailed cost estimates.

Utilizing a user-friendly interface featuring a database-driven spreadsheet, WinEst estimating software offers the estimator unparalleled power to create estimates and manage projects. With the addition of the WinEstimator Scheduling Integrator, estimators can share information with Primavera Project Planner .

Features At a Glance

Import Planned Schedule

- Imports task tables directly into WinEst after the initial schedule is setup
- Eliminates data entry errors by sharing information between applications

Export Budgeting Information Directly to Scheduling

- Automatically populates scheduling cost account dictionary
- Populates scheduling cost categories based on estimating phases
- Automatically creates required resources
- Creates all required scheduling activities
- Creates and links all required resource assignments

Comprehensive Audit Trail

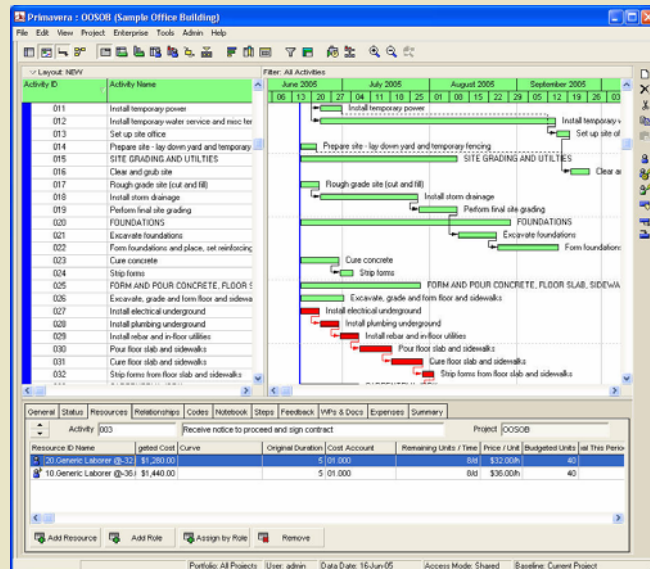
- Tracks all changes and modifications
- Provides item level details

7 Work Breakdown Structures

- User defined for tagging and tracking
- Customizable sorting per estimate
- Efficient resorting capabilities

Create Custom Spreadsheets

- Unlimited customizable filters
- Flexible view settings
- Enables job specific reporting



WinEst Pro Series Estimating Software Required

PC with 300 megahertz or higher processor clock speed recommended; 266 MHz minimum required (single or dual processor system);* Intel Pentium/Celeron family, or AMD K6/Athlon/Duron family, or compatible processor recommended; Microsoft Windows 95, 98, or Microsoft Windows Millennium Edition, or Microsoft Windows NT, or Microsoft Windows 2000, or Microsoft XP; 32 MB RAM minimum supported; (128 megabytes (MB) of RAM or higher recommended); Super VGA (800 × 600) or higher-resolution video adapter and monitor; CD-ROM drive; Hard disk space for application: approximate 15 MB for product; Keyboard and Mouse or compatible pointing device